



“The Mitchell B-25 Tribute to the
Doolittle Tokyo Raiders”
17 – 18 April 2010
Arrival Procedures
to
Wright Field

Dave Egner/Jack Wilson
Air Boss

David C. Thomas
NMUSAF Event Coordinator



Dayton Wright Field

- 7000 X 150 foot east/west runway
 - First 1000 foot 09 displaced for event, 6000' available
- Arrivals to the east
- Departures to the west
- Arrival runway displaced 1000'
 - Approach end 09 elevation 784' MSL
 - Departure end 09 elevation 830' MSL
 - Powerlines and trees ½ mile on approach to runway 09 up to 936' MSL

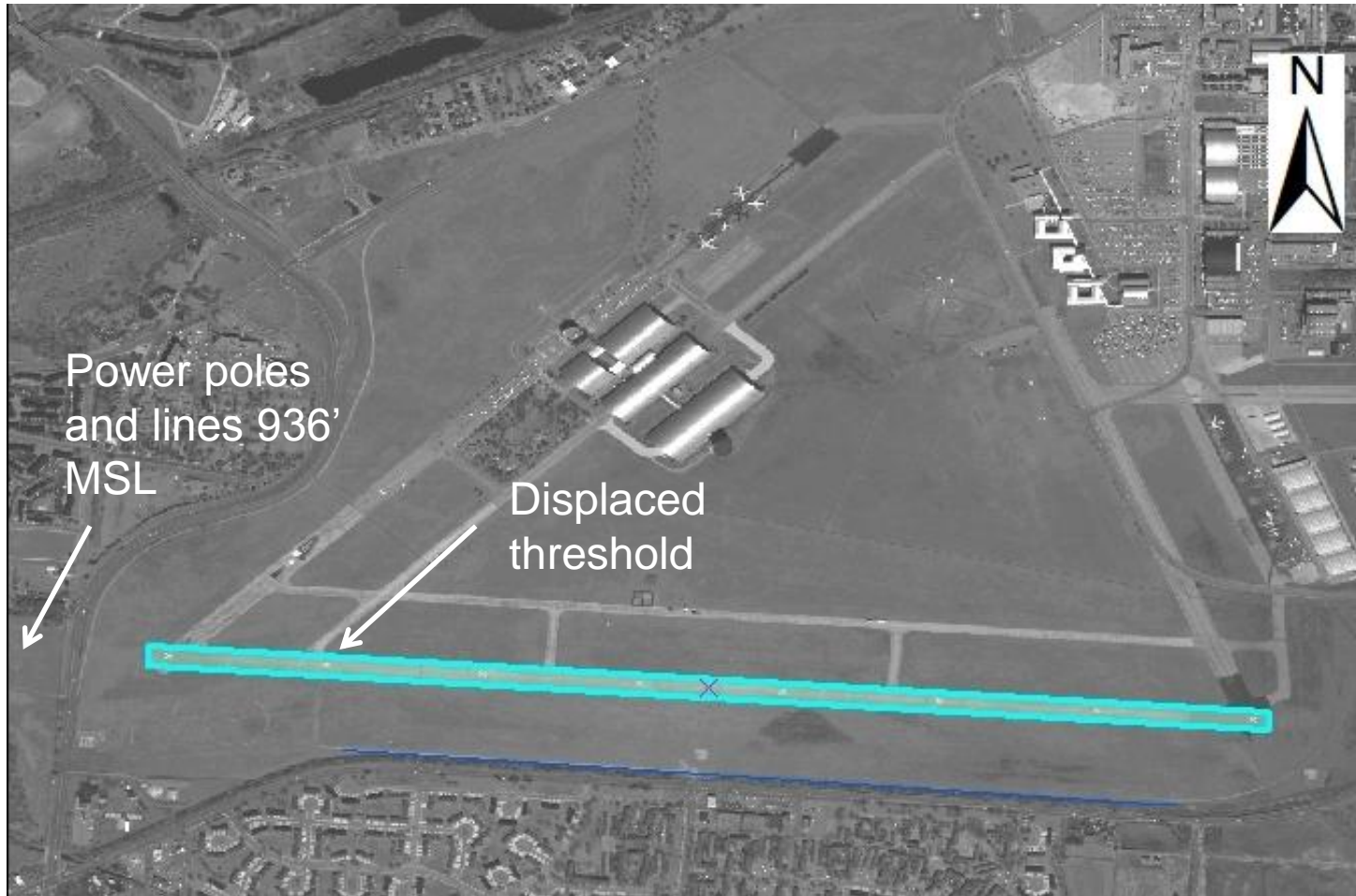
Dayton Wright Field

- Departure end 09
 - Rapidly rising terrain up to 960' MSL
 - Laser tower 1,150' MSL north of 09 departure end
 - Runway remaining markers on left side of rwy
 - Windsock midfield adjacent to parallel taxiway
 - Portable tower (Doolittle Control 123.225)

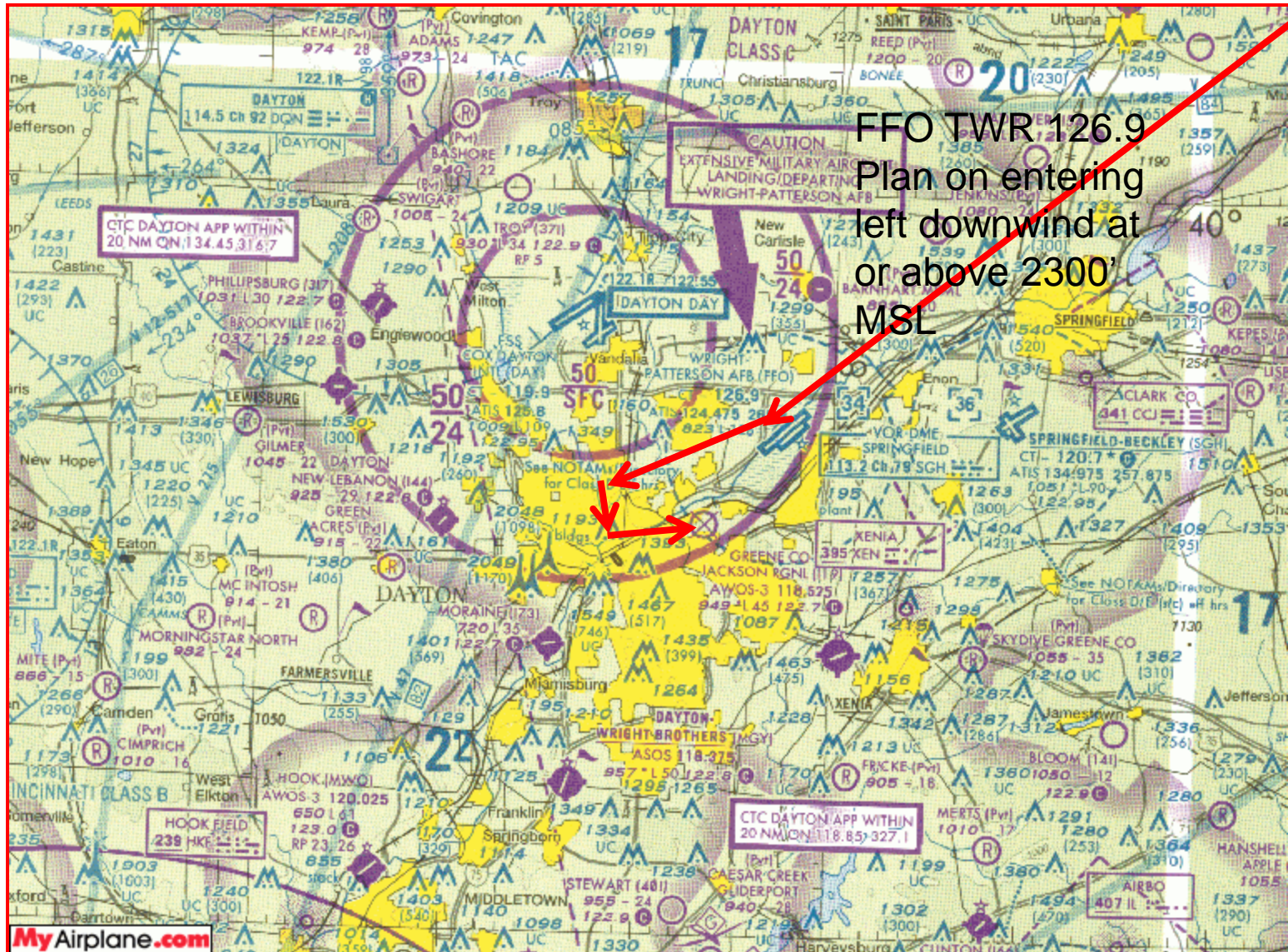
Dayton Wright Field

- Event weather requirements per USAF event package
 - 2500 foot ceiling and 5 miles visibility
 - Wind component IAW aircraft T.O. 1B-25 (T) N-1
 - Dry runway
 - If forecast calls IFR weather or less than required, the inclement weather plan will be implemented landing all aircraft on Wright-Patterson AFB active airfield
- Emergency fields en route
 - Springfield, Ohio (KSGH) 120.7 part time tower, 9000' runway + crosswind 5000' runway
 - Wright-Patterson AFB, Ohio (KFFO) 126.9, main runway under construction parallel 7000' (05R/23L) in use
 - Greene County Airport (I19) 122.7 Unicom 4500' runway
- Aircraft emergency
 - Land at nearest airport
 - Non-life threatening such as gear problem suggest Wright-Patterson AFB or Springfield landing
 - Contact Air Boss when safely on the ground if other than Dayton Wright Field

WPAFB Museum Runway



Arrival To DWF



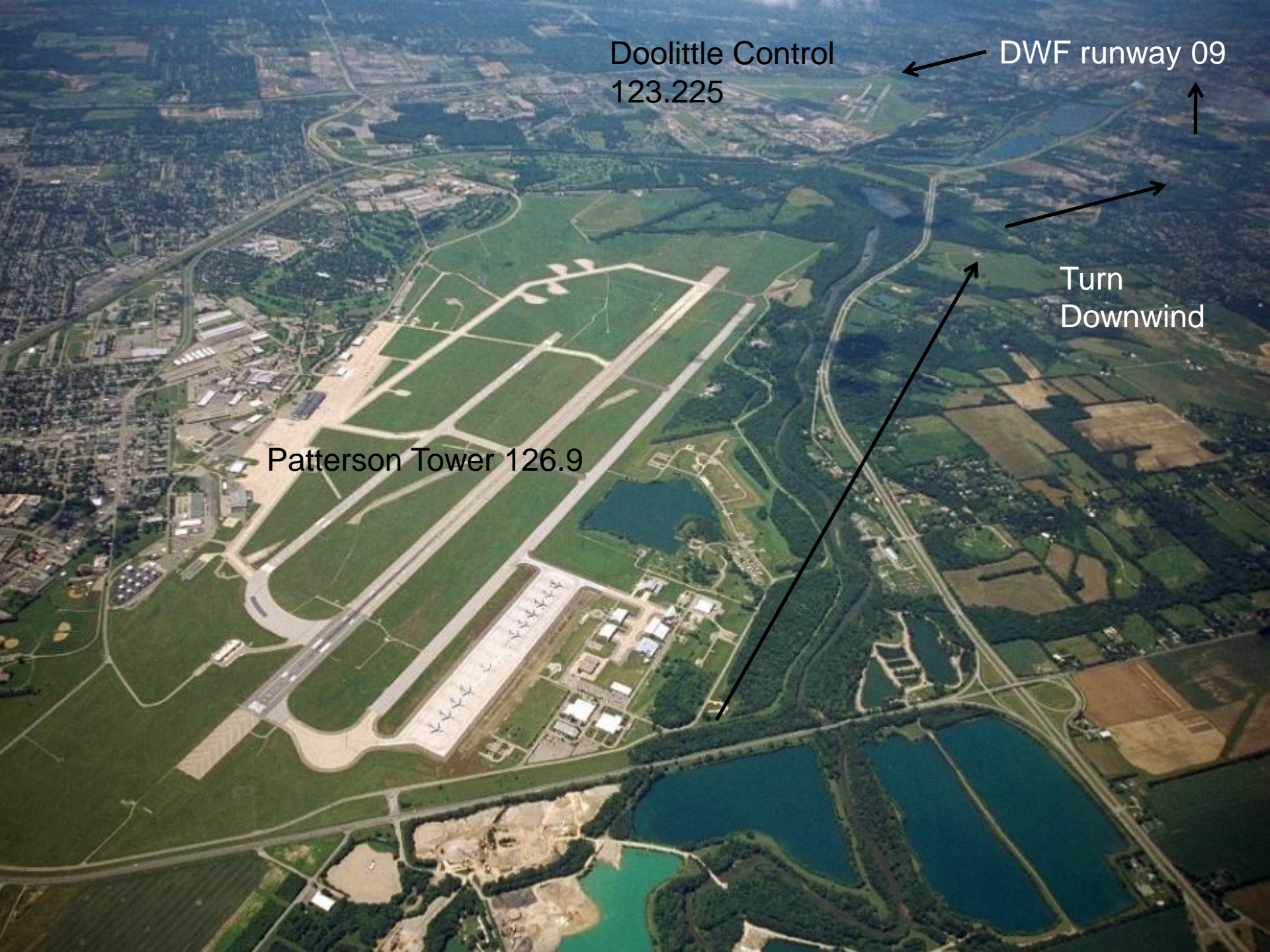
FFO TWR 126.9
Plan on entering
left downwind at
or above 2300'
MSL

Doolittle Control
123.225

DWF runway 09

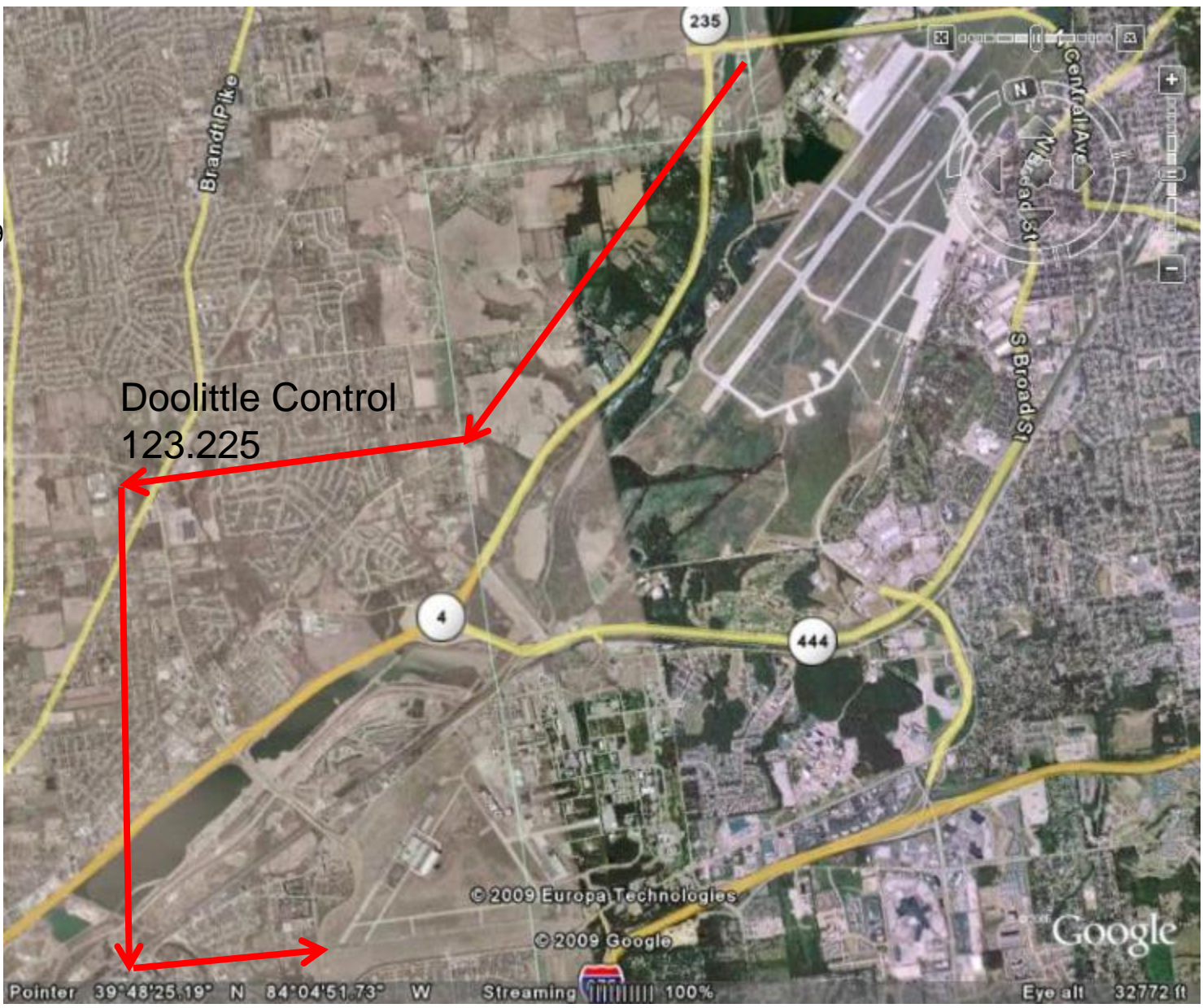
Patterson Tower 126.9

Turn
Downwind

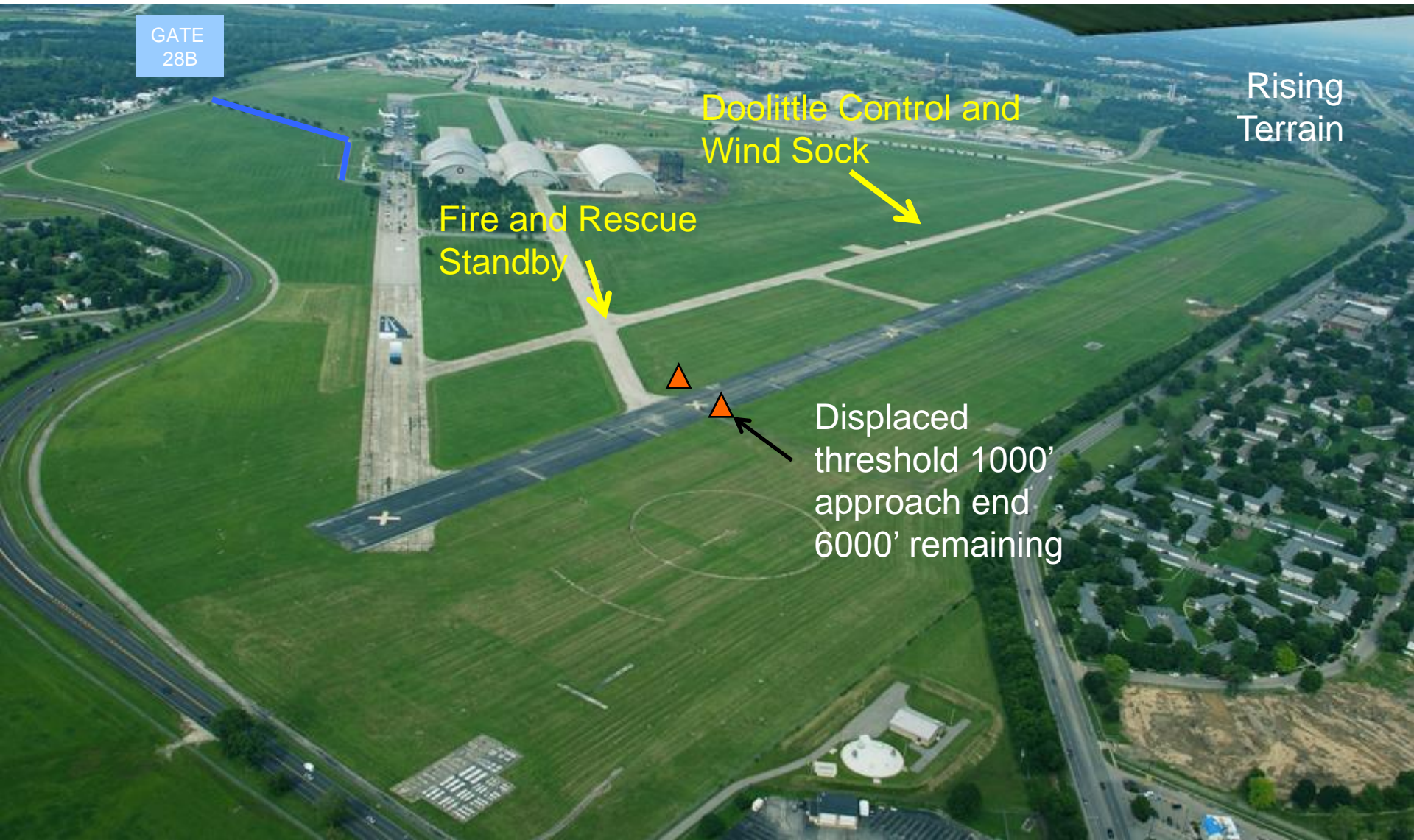


Primary Arrival to Wright Field - Layout for the Mitchell B-25 Tribute to the Doolittle Tokyo Raiders – April 17-18, 2010

Flight Plan 1:
DWF arrive 09



NMUSAF One Way In/One Way Out Landing Runway 09



GATE
28B

Doolittle Control and
Wind Sock

Rising
Terrain

Fire and Rescue
Standby

Displaced
threshold 1000'
approach end
6000' remaining

Taxi Hold Location While Awaiting Last B-25 to Land



Layout Display for the Mitchell B-25 Tribute to the Doolittle Tokyo Raiders – April 17, 2010



Air Boss Notes

- Show Control (Doolittle Control): 123.225
- Runway 6000' x 150' land to the east/depart west
- Lost communication procedures:
 - Contact FFO TWR 126.9
 - If no contact depart class D airspace and return to Urbana. Contact Air Boss (937) 307-4027 or (937) 673-5628